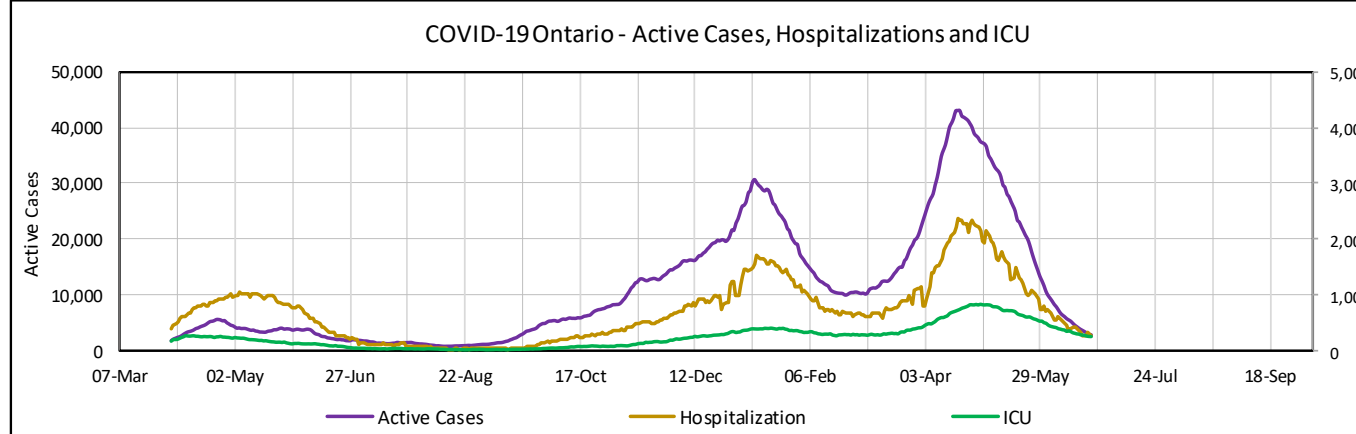
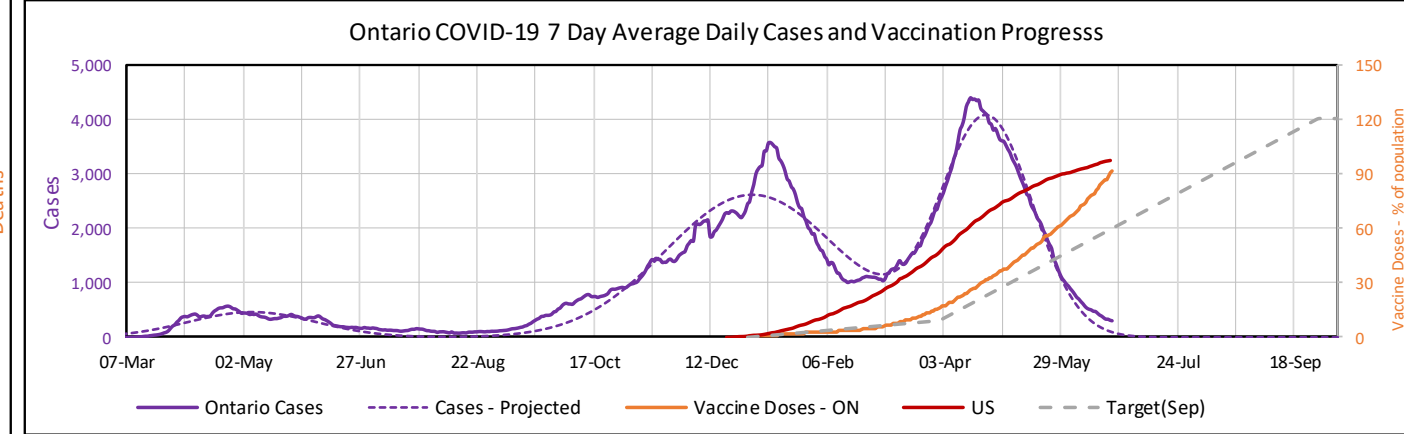
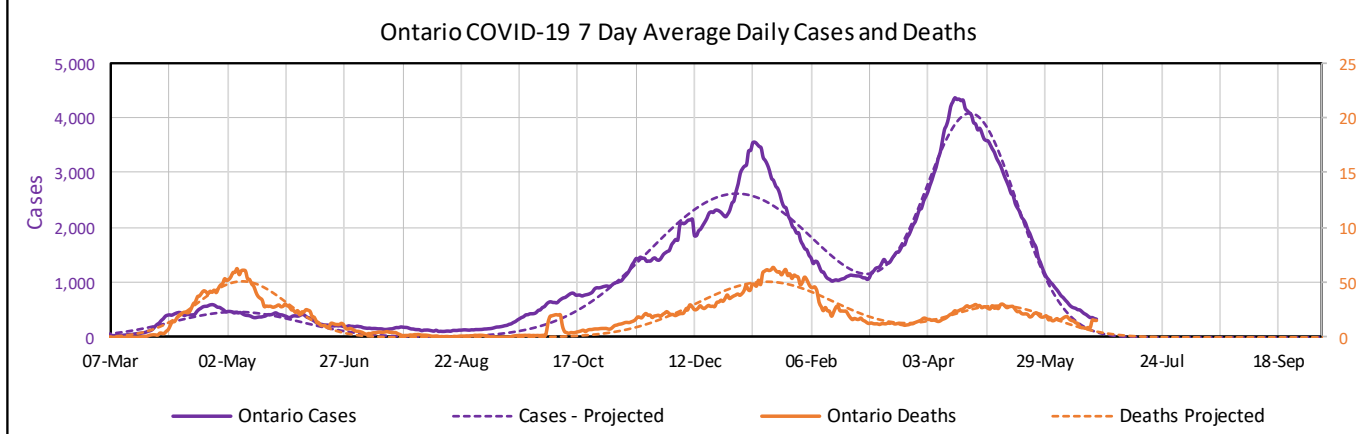
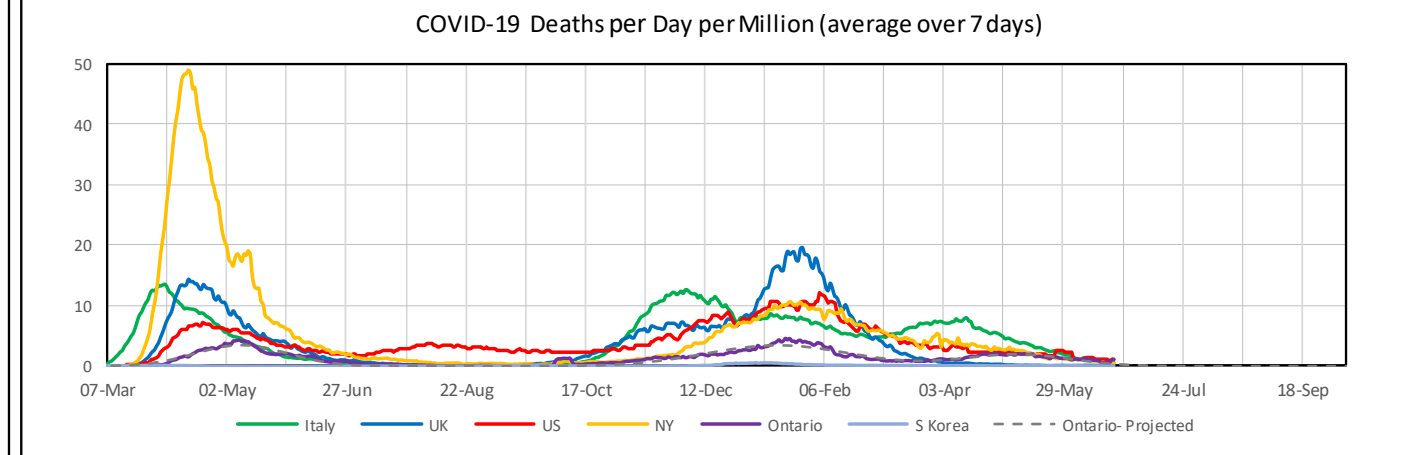
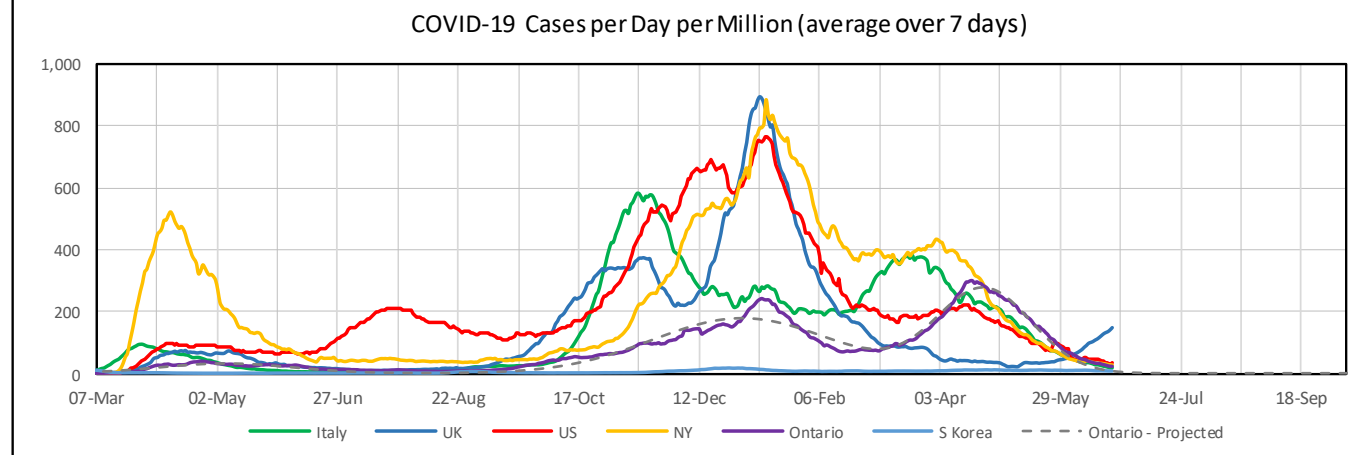
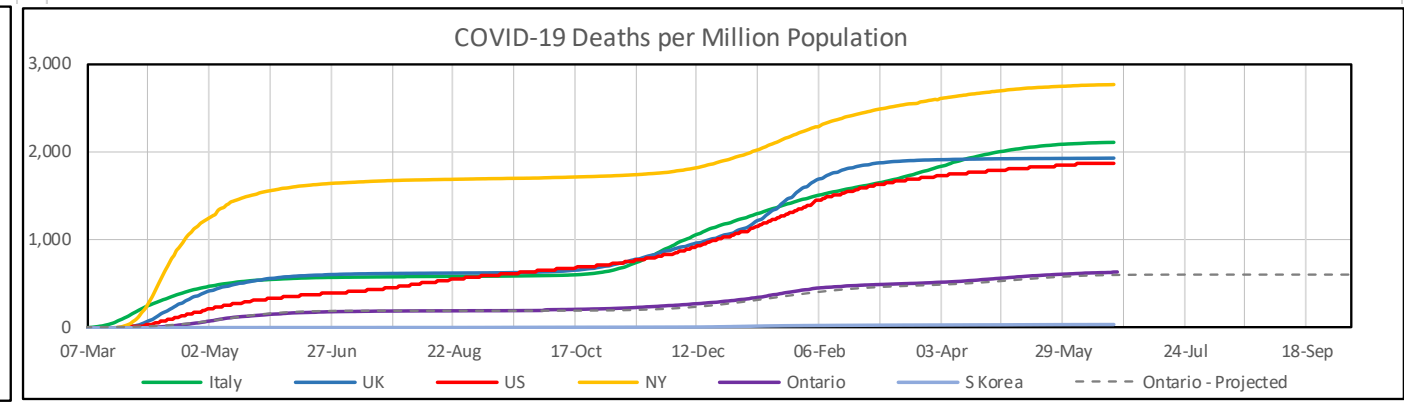
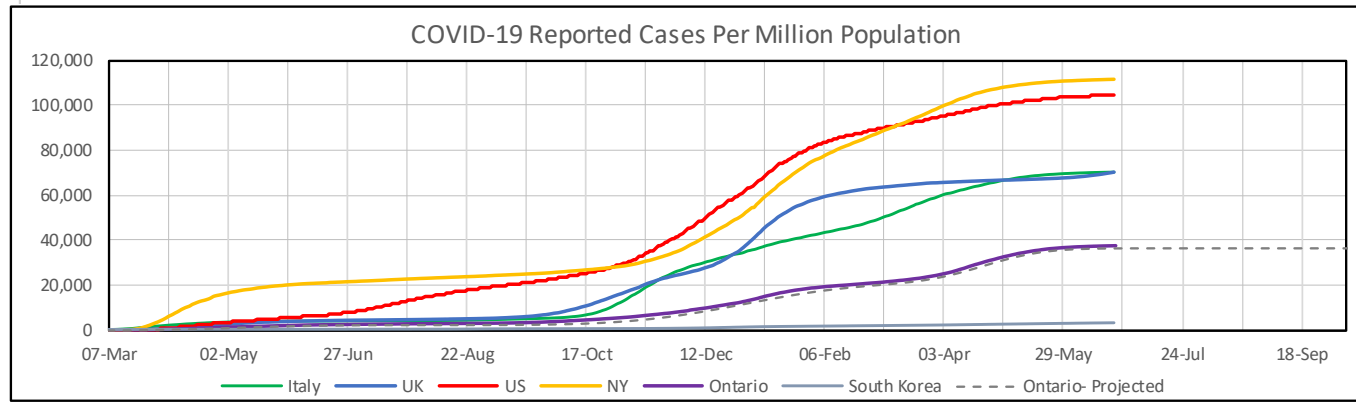


COVID-19 Observations – 23 June, 2021 – by Alex Harrington



Life is as perfect as it could possibly be. I have an appointment for a second shot and a haircut. Not at the same time though. We're going to Step 2 of the re-opening a whole two days early – now it's going to be June 30 instead of July 2. Lots of time to ponder the cancelled Canada Day activities. (Guess I can't call it Dominion Day any more – Canada Day has always bugged me – we're the only country that names things after ourselves.)

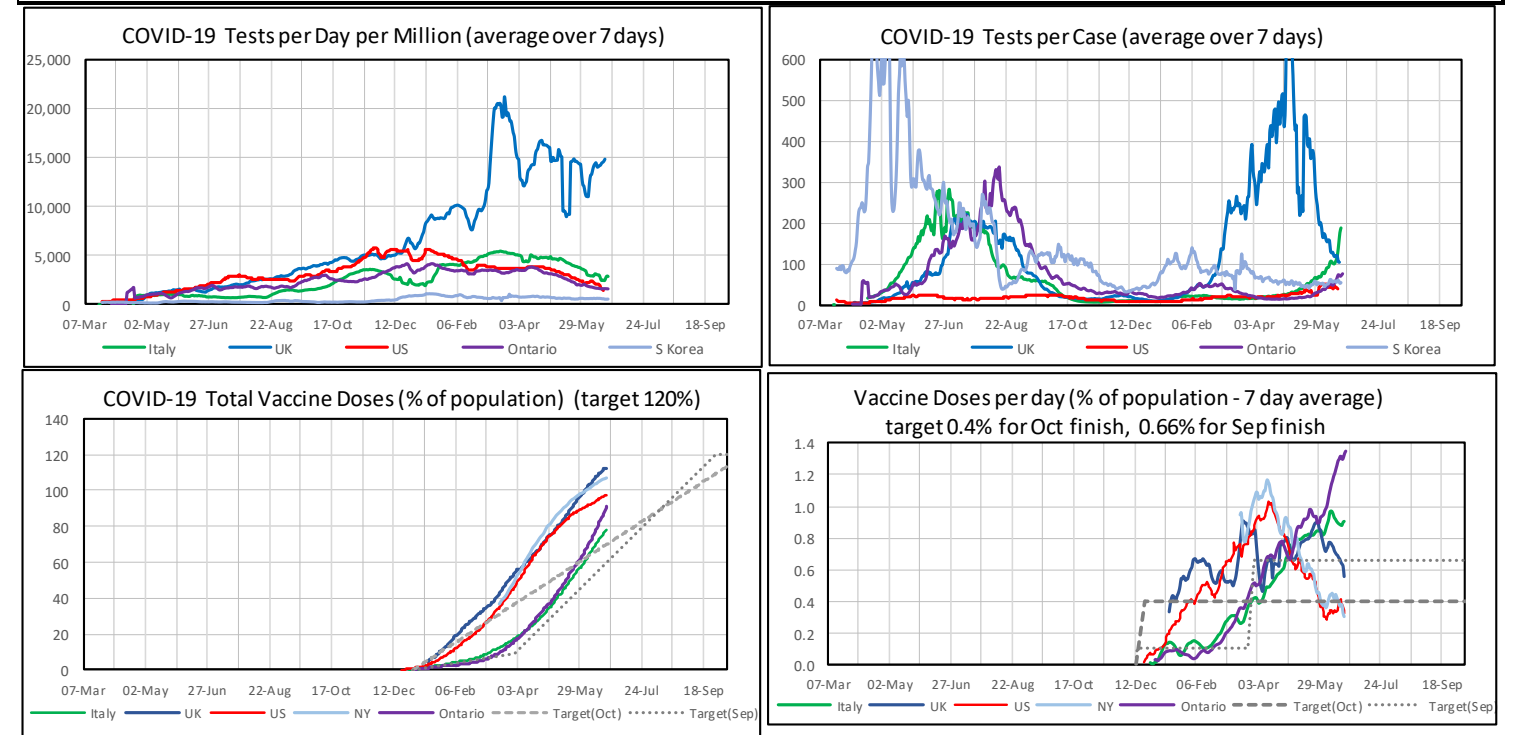
Our vaccinations rates are still climbing, while the US is still falling, and rates in the UK have dropped significantly. We're still on track to surpass the US in vaccine delivery as a percentage of population in a week or so.

The delta variant is projected to account for over 50% of cases in the US in a couple more weeks, and the UK cases are still climbing in spite of its stellar immunization performance. We can expect this variant to take over here – it will just take a little longer. And now there is a delta plus variant. This new variant's claim to fame is that it is even more transmissible than its parent, and more readily gets into your lungs to do nasty things. There's very little information about it or how effective vaccines are on it, but it shows that covid is not finished with us, so we should still exercise caution.

Take care of yourselves and don't endanger others.

COVID-19 Summary Data										
	Tests per Million	Tests per Day		Tests per Reported Case		Cases per Million		Deaths per Million		Deaths Per Case
	Total to Date	Average over Last 7 days		Total	Last 7 days	Total to date	Average per day Last 7 days	Total to date	Average per day Last 7 days	Total to date (%)
South Korea	200,153	25,730	502	67	53	2,965	8.9	39	0.044	1.3%
Italy	1,156,034	173,498	2,865	16	188	70,261	18	2,103	0.6	3.0%
UK	2,988,806	985,798	14,837	43	103	70,014	148	1,927	0.2	2.8%
US	1,403,561	496,530	1,509	13	38	104,644	36	1,878	1.0	1.8%
Ontario	1,085,102	22,938	1,574	29	75	37,290	22	625	1.0	1.7%

South Korea and Canada report people tested. The others report total tests. Total tests can be 10-50% higher than people tested



Vaccination charts assume half the people require 2 shots and half require 1 shot, so 1.5 doses per person on average.
 Assume 80% of population needs vaccination for it to be effective, 80% of 1.5 = 1.2 doses per person on average, so total doses = 120% of population.
 Assume vaccination program completed in October - 300 days from January, so 1.2 / 300 or 0.004 doses per day, or dosing rate = 0.4% of population per day
 To start on Apr 1 and finish by Sep 30 (180 days), dosing rate = 1.2 / 180 or 0.0066 doses per day, or dosing rate = 0.66% of population per day