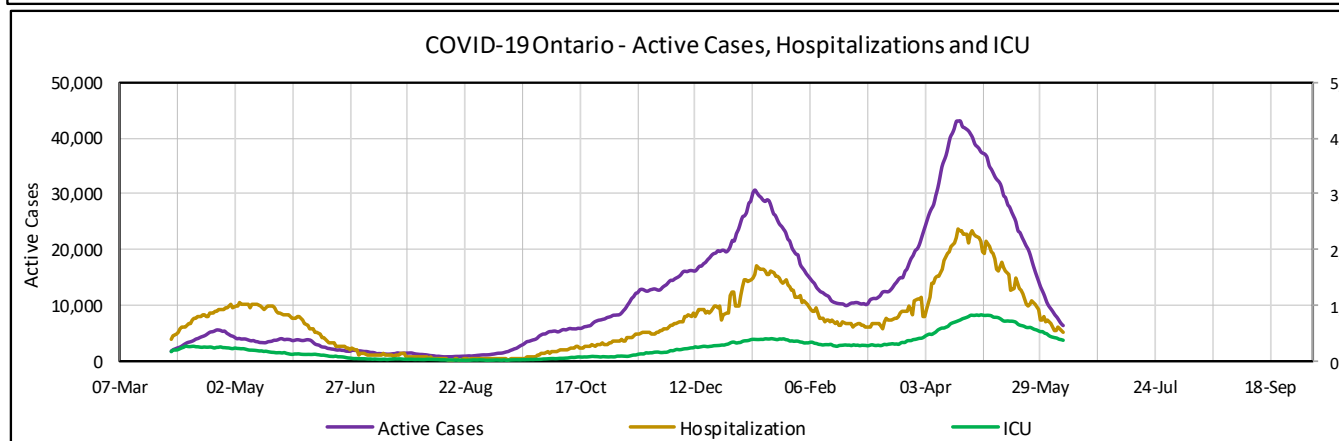
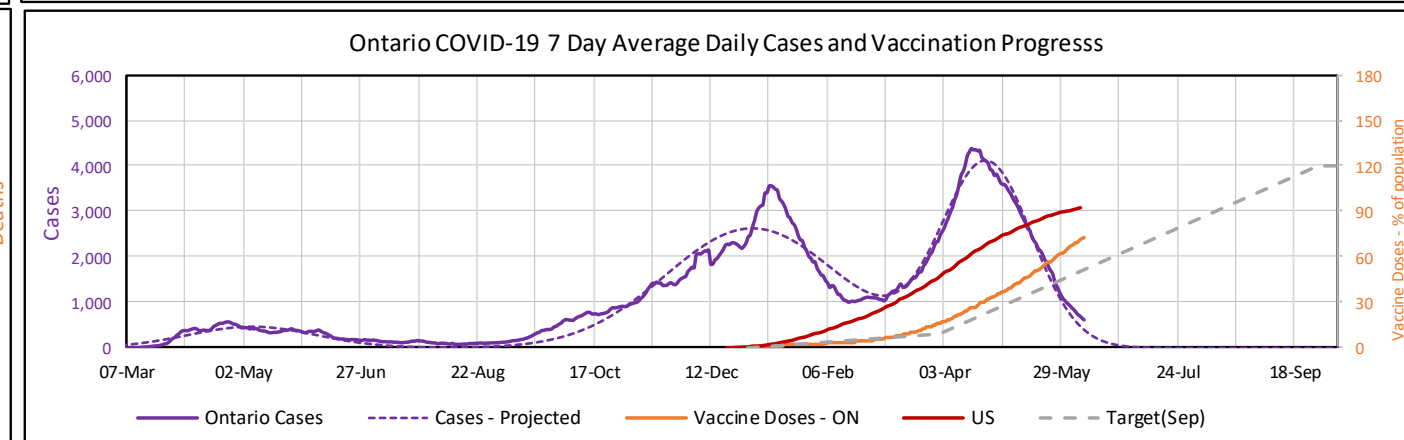
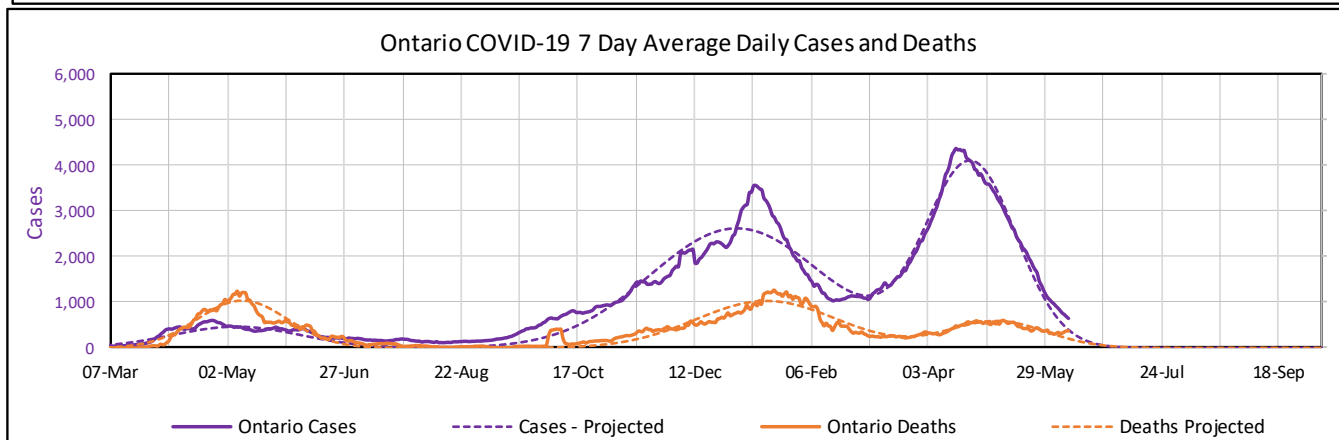
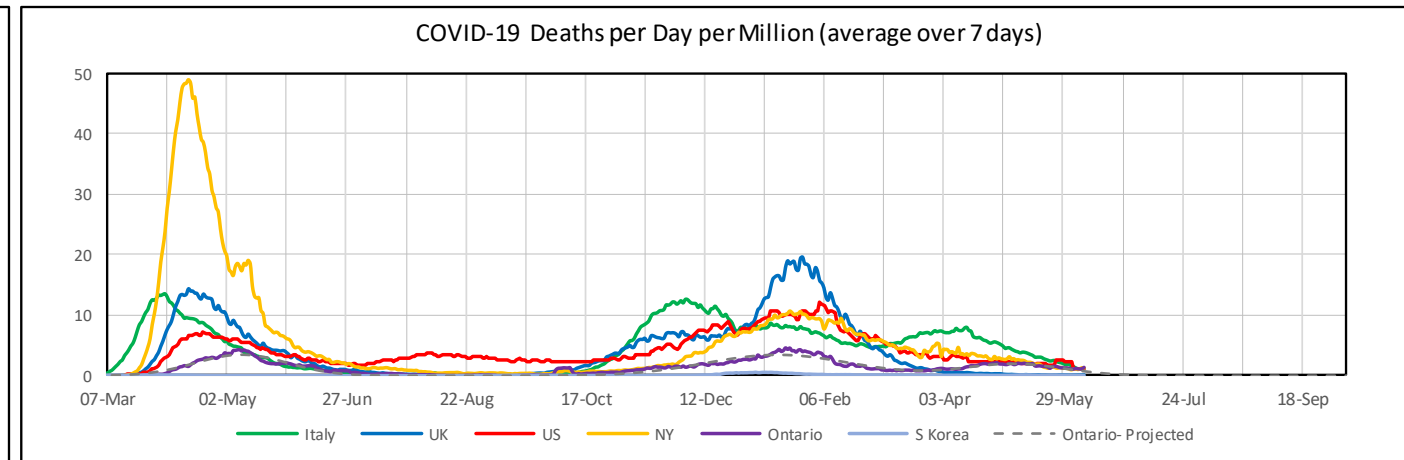
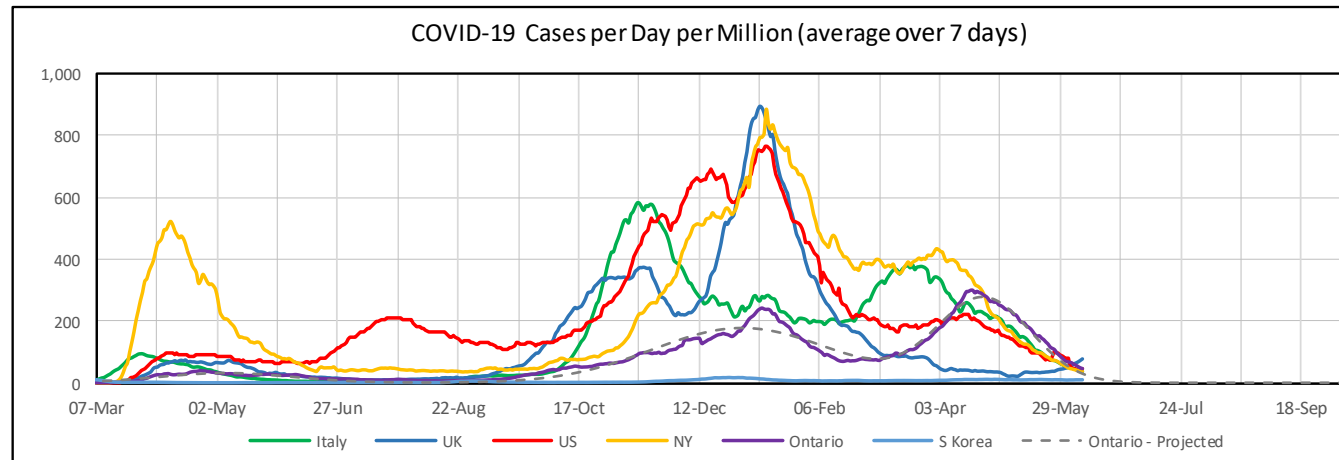
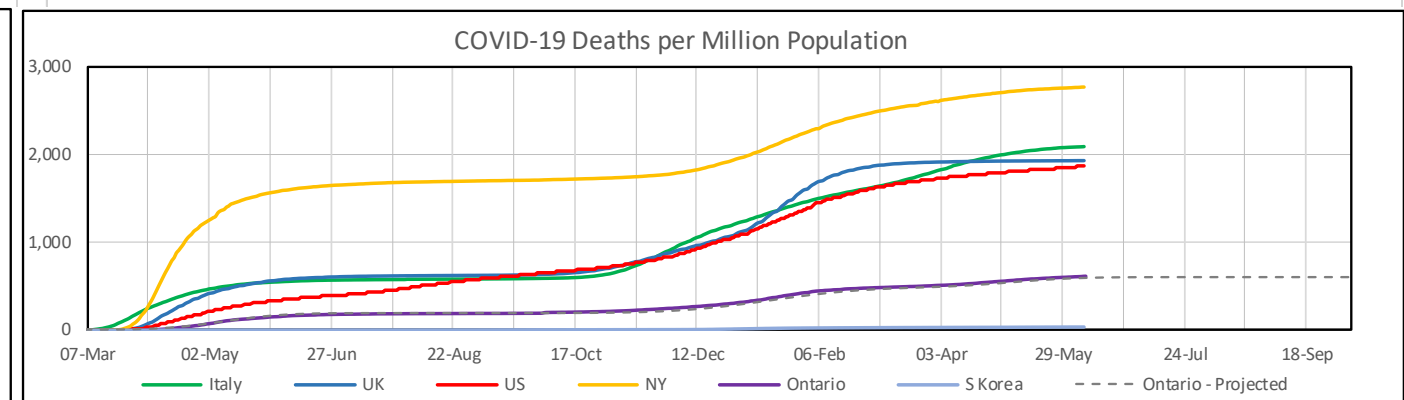
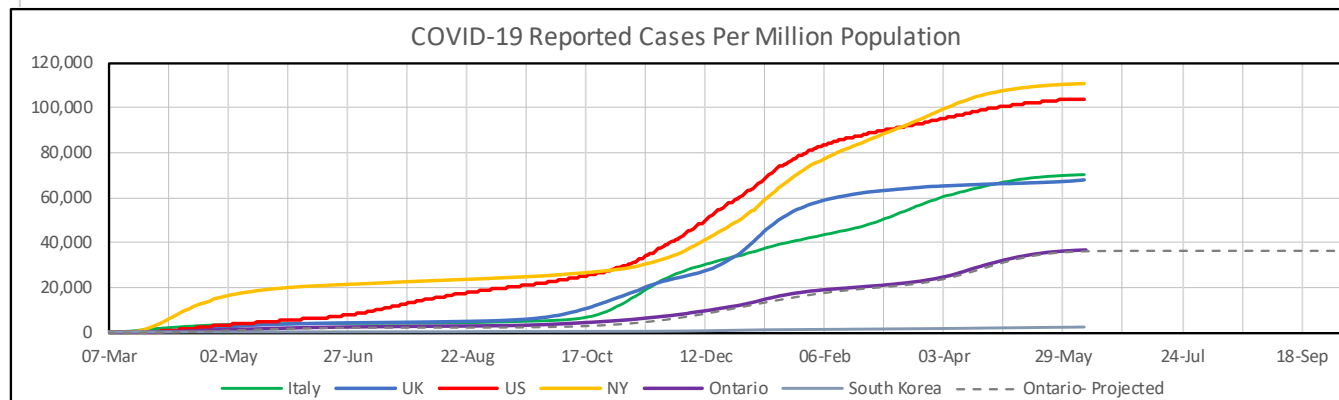


COVID-19 Observations – 10 June, 2021 – by Alex Harrington



Another slow week – everyone getting ready for Step 1 re-opening tomorrow. Trying to figure out what to do with hair for another month, if you haven't already just shaved it.

Our vaccinations continue to climb – we seem to be over that brief period of being stuck (no pun intended). The US continues to drop and it appears they are less and less likely to reach their vaccination target for the 4th of July.

All the indicators continue to drop – cases, hospitalizations, ICU use. If this continues, we may see Step 2 of the re-opening accelerated.

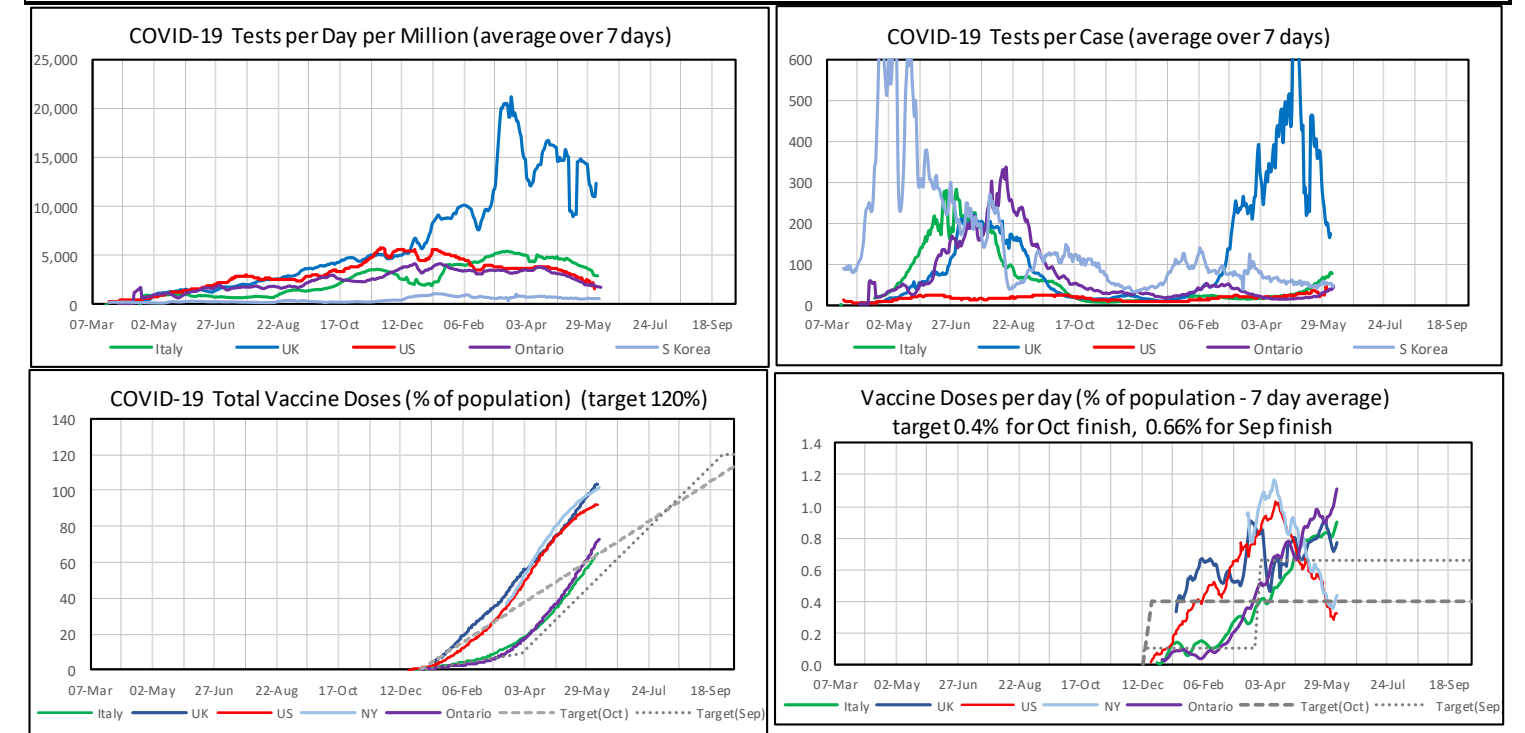
Everything looks rosy, and we'll have a great summer, finally.

Don't be hasty – just look around a bit for a hint of what might happen. The UK mounted a huge vaccination program – unlike the US, they have kept at it. They have partially re-opened after a serious lockdown, and have an intensive testing program to keep on top of the virus. If you look at the case charts, above, you'll see that the UK cases are starting to rise again, mostly due to the delta (Indian) variant. Their hospitalizations and deaths are also rising, and the government is now assessing whether or not to proceed with the next step of its re-opening plan. So even with intense vaccination, aggressive testing, and phased re-openings, this virus is still capable of screwing up the best laid plans. Best to watch the UK to see how this plays out- it will give us a good idea of what we can expect.

Take care of yourselves and don't endanger others.

COVID-19 Summary Data										
	Tests per Million	Tests per Day		Tests per Reported Case		Cases per Million		Deaths per Million		Deaths Per Case
	Total to Date	Average over Last 7 days		Total	Last 7 days	Total to date	Average per day Last 7 days	Total to date	Average per day Last 7 days	Total to date (%)
South Korea	192,665	28,362	554	68	45	2,832	11.6	39	0.039	1.4%
Italy	1,113,328	177,117	2,925	16	76	69,952	37	2,092	1.2	3.0%
UK	2,786,691	821,033	12,358	41	173	68,155	77	1,924	0.1	2.8%
US	1,373,319	524,640	1,594	13	35	104,061	45	1,863	1.1	1.8%
Ontario	1,062,890	25,336	1,739	29	43	36,930	46	613	1.3	1.7%

South Korea and Canada report people tested. The others report total tests. Total tests can be 10-50% higher than people tested



Vaccination charts assume half the people require 2 shots and half require 1 shot, so 1.5 doses per person on average.
 Assume 80% of population needs vaccination for it to be effective, 80% of 1.5 = 1.2 doses per person on average, so total doses = 120% of population.
 Assume vaccination program completed in October - 300 days from January, so 1.2 / 300 or 0.004 doses per day, or dosing rate = 0.4% of population per day
 To start on Apr 1 and finish by Sep 30 (180 days), dosing rate = 1.2 / 180 or 0.0066 doses per day, or dosing rate = 0.66% of population per day